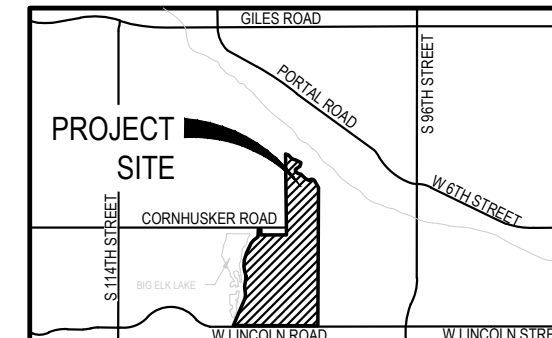




GRANITE LAKE

2024 STREET RECONSTRUCTION

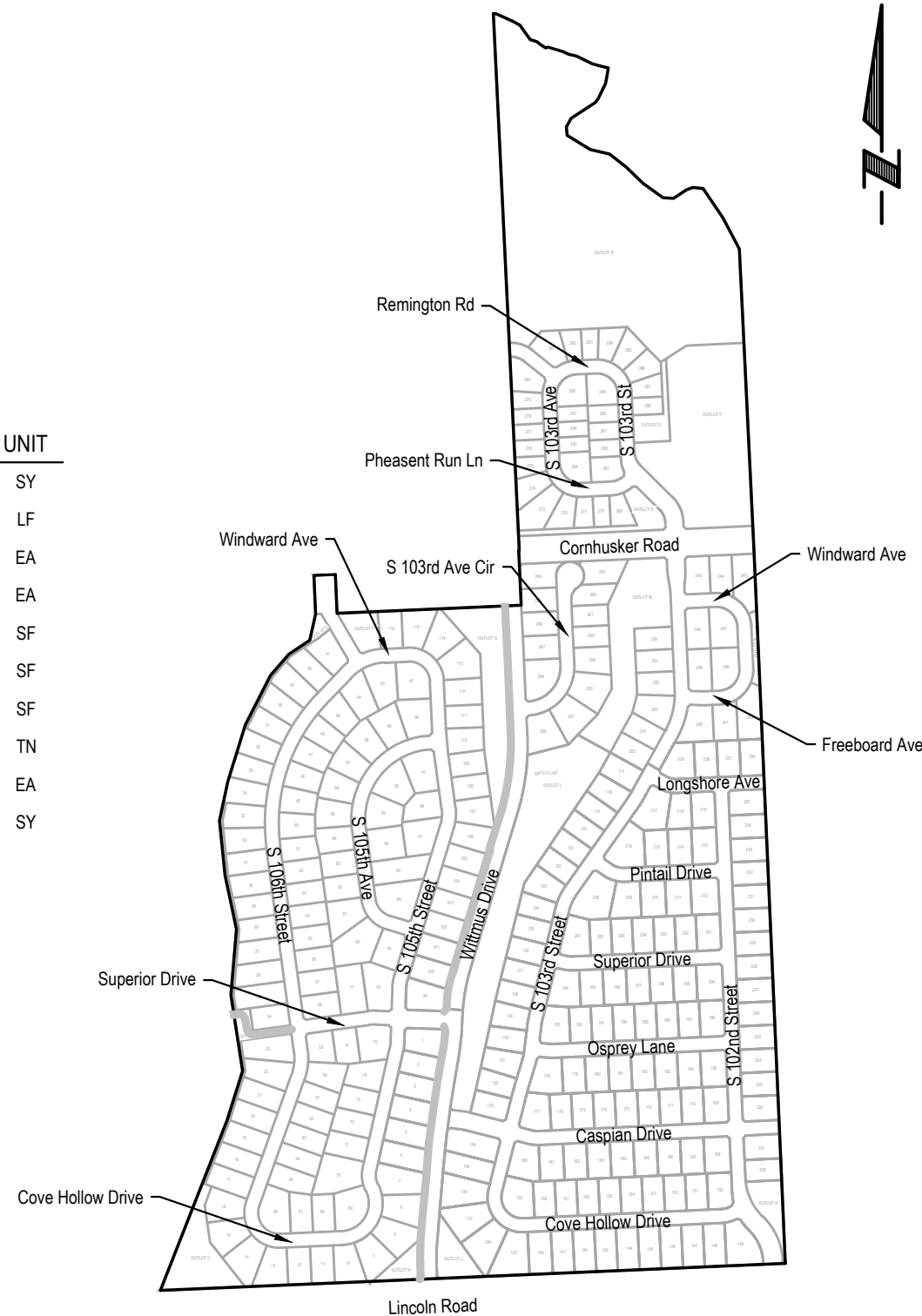
SID NO. 317
SARPY COUNTY, NEBRASKA



VICINITY MAP

APPROXIMATE BID QUANTITIES

ITEM	DESCRIPTION	QUANTITY	UNIT
1	CONCRETE PAVEMENT REPAIR, SMALL AREA	122	SY
2	FULL DEPTH SAW CUT EXISTING PAVEMENT	323	LF
3	ADJUST WATER VALVE TO GRADE	2	EA
4	ADJUST MANHOLE TO GRADE	4	EA
5	REMOVE AND REPLACE PCC SIDEWALK	43	SF
6	REMOVE AND REPLACE PCC CURB RAMP	60	SF
7	CONSTRUCT DETECTABLE WARNING PANEL (1 location)	8	SF
8	REMOVE AND REPLACE FAULTY SUBGRADE	25	TN
9	ADJUST SPRINKLER (AS NEEDED)	1	EA
10	PERFORM DIAMOND GRINDING (4 locations)	65	SY



INDEX OF SHEETS

SHEET NO. DESCRIPTION

1	COVER
2	PLAN



APPLICANT

SID # 317
Gerald Torczon, Chairman
1246 Golden Gate Drive, Suite 1
Papillion, NE 68046
P: 402.339.9550
F: 402.339.0401
sullivan@adamsandsullivan.com

DESIGNER

E & A Consulting Group, Inc
Teresa Wooten, P.E.
10909 Mill Valley Road, Suite 100
Omaha, NE 68154
P: 402.895.4700
F: 402.895.3599
twooten@eacg.com

INSPECTOR

E & A Consulting Group, Inc
Randall L. Pierce, P.E.
10909 Mill Valley Road, Suite 100
Omaha, NE 68154
P: 402.895.4700
F: 402.895.3599
rpierce@eacg.com

CONTRACTOR

E & A CONSULTING GROUP, INC.
Engineering • Planning • Environmental & Field Services
10909 Mill Valley Road, Suite 100 • Omaha, NE 68154
Phone: 402.895.4700 • Fax: 402.895.3599
www.eacg.com
State of NE Certificate of Authorization #CA0008



GRANITE LAKE
2024 STREET
RECONSTRUCTION
SID 317
SARPY COUNTY, NEBRASKA

COVER

Revisions	Date	Description
1	3/20/2024	TAMW
2		JME

Proj No: P2014.562.001
Date: 3/20/2024
Designed By: TAMW
Drawn By: JME
Scale: 1" = 60'
Sheet: 1 of 2



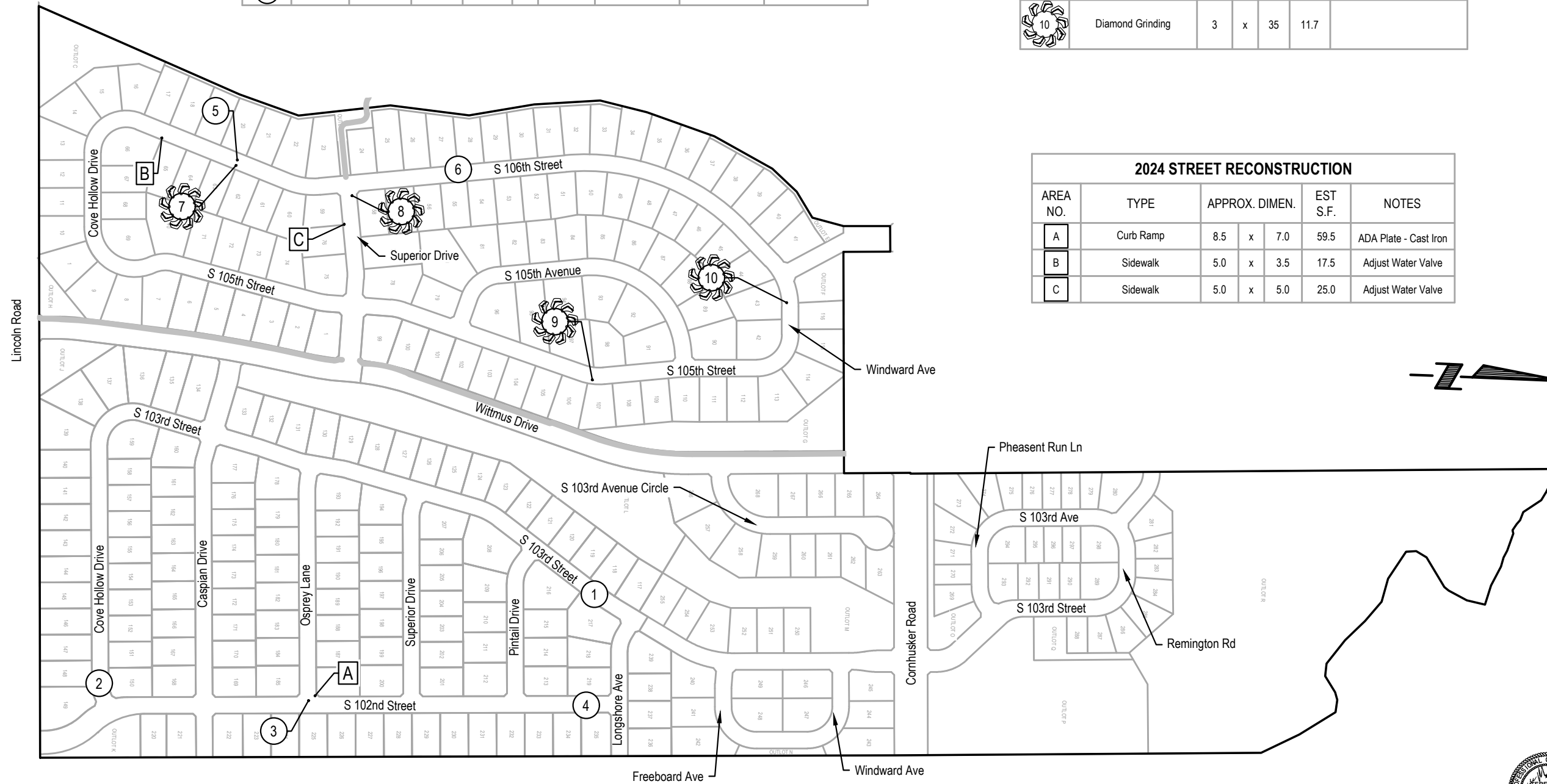
LEGEND

Trail

2024 STREET RECONSTRUCTION									
AREA NO.	NO. POURS	SAW CUT L.F.	CURB L.F.	WIDTH	X	LENGTH	LARGE AREA EST S.Y.	SMALL AREA EST S.Y	NOTES
1	2	70		9.0	x	26.0		26.0	Adjust Manhole
2	2	63		9.0	x	22.5		22.5	Adjust Manhole
3	1	30	13	16.0	x	10.0		17.8	
4	2	58		9.0	x	20.0		20.0	Adjust Manhole
5	2	46		9.0	x	14.0		14.0	Adjust Manhole
6	1	56	14	8.0	x	24.0		21.3	

2024 STREET RECONSTRUCTION - DIAMOND GRINDING					
AREA NO.	TYPE	APPROX. DIMEN.		EST S.Y.	NOTES
7	Diamond Grinding	3	x 5	1.7	
8	Diamond Grinding	3	x 30	10.0	
9	Diamond Grinding	3	x 124	41.3	
10	Diamond Grinding	3	x 35	11.7	

2024 STREET RECONSTRUCTION					
AREA NO.	TYPE	APPROX. DIMEN.		EST S.F.	NOTES
A	Curb Ramp	8.5	x 7.0	59.5	ADA Plate - Cast Iron
B	Sidewalk	5.0	x 3.5	17.5	Adjust Water Valve
C	Sidewalk	5.0	x 5.0	25.0	Adjust Water Valve



E & A CONSULTING GROUP, INC. Engineering • Planning • Environmental & Field Services <small>10809 Mill Valley Road, Suite 100 • Omaha, NE 68154 Phone: 402.265.4700 • Fax: 402.265.3559 State of NE Certificate of Authorization #CA0008</small>		GRANITE LAKE 2024 STREET RECONSTRUCTION <small>SID 317 SAPPY COUNTY, NEBRASKA</small>	PLAN	Revisions <table border="1" style="width: 100%; border-collapse: collapse;"> <tr> <th>No.</th> <th>Date</th> <th>Description</th> </tr> <tr> <td> </td> <td> </td> <td> </td> </tr> </table>	No.	Date	Description			
No.	Date	Description								
Proj No: P2014.562.001 Date: 3/20/2024 Designed By: TAMM Drawn By: JMB Scale: 1" = 30' Sheet: 2 of 2	K:\Projects\2014\562\p00\2024 Street Reconstruction\Engineering\CAD Files\Paving\Granite Lake 2024 Street Reconstruction-000.dwg 3/20/2024 2:03 PM Jessica Brown									